

# Compact PLC

- INAT I/O IPC PLC
- Accessories INAT I/O IPC PLC

# INAT I/O IPC PLC

Compact I/O IPC  
Communication, Visualization

**Cost-effective industrial compact PC as S7 PLC or as S5 PLC.  
Compatible with CPU 416 or CPU 945.**

## AREAS OF APPLICATION

- S7: Compatible with CPU 416: quantity structure of a CPU 416 (Flags, Timer, Counter, FCs, FBs, local data per OB), performance of a CPU 315
- S5: Compatible with CPU 945
- Hardware identical to Wago I/O IPC
- Programming with Step 7 or with Step 5 (serial or via Ethernet)
- Network connections are parameterized with the XNet software
- Small housing is mountable on a DIN 35 rail
- Wago I/O modules can be directly connected
- Typical markets for IPC applications are the high end machinery industry (e.g., packaging, bottling, textiles, production and metal & wood processing).
- Onboard Profibus master interface (Hilscher Sycon Profibus configuration software required)

## INAT I/O IPC PLC

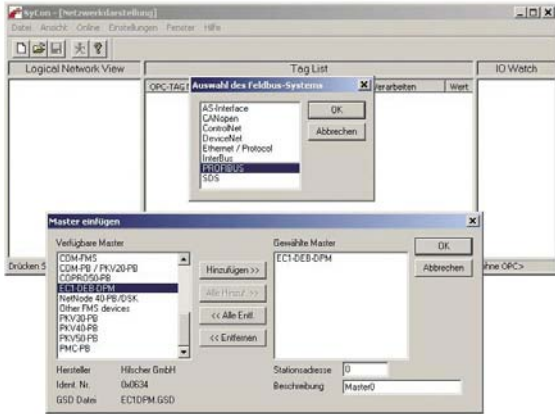


INAT I/O IPC PLC

- Including null mode cable (2 x 9pin D-sub female) for serial programming
- Including XNet software for parameterizing network connections
- Including VCOM for programming via Ethernet without Softnet (see page 24)

<b>Serial Interface:</b>	1 x RS232, 9pin D-Sub male for serial parameterization (via null mode cable)
<b>Ethernet Interface:</b> 100 Mbps	1 x TP (RJ45)
<b>Fieldbus:</b>	Profibus Master
<b>Memory:</b> User memory code: User memory data:	2,7 MB 1 MB 1,7 MB
<b>Programming language:</b>	Step 7, Step 5
<b>Transport protocols:</b>	TCP/IP, TCP/IP with ISO on TCP (RFC1006)
<b>Application protocols:</b>	S7 Protocol, S5-AP, Send / Receive
<b>PG/PCs with Step 7/5:</b>	via RS232 Interface or via Ethernet Interface
<b>Supply Voltage:</b> Admissible range:	DC 24V 10 up to 30V
<b>Dimensions [in mm]:</b>	172 x 28 x 100
	<b>Order numbers:</b>
I/O IPC PLC as CPU 416	700-7200-01
I/O IPC PLC as CPU 945	700-7300-01

# Accessories INAT I/O IPC PLC

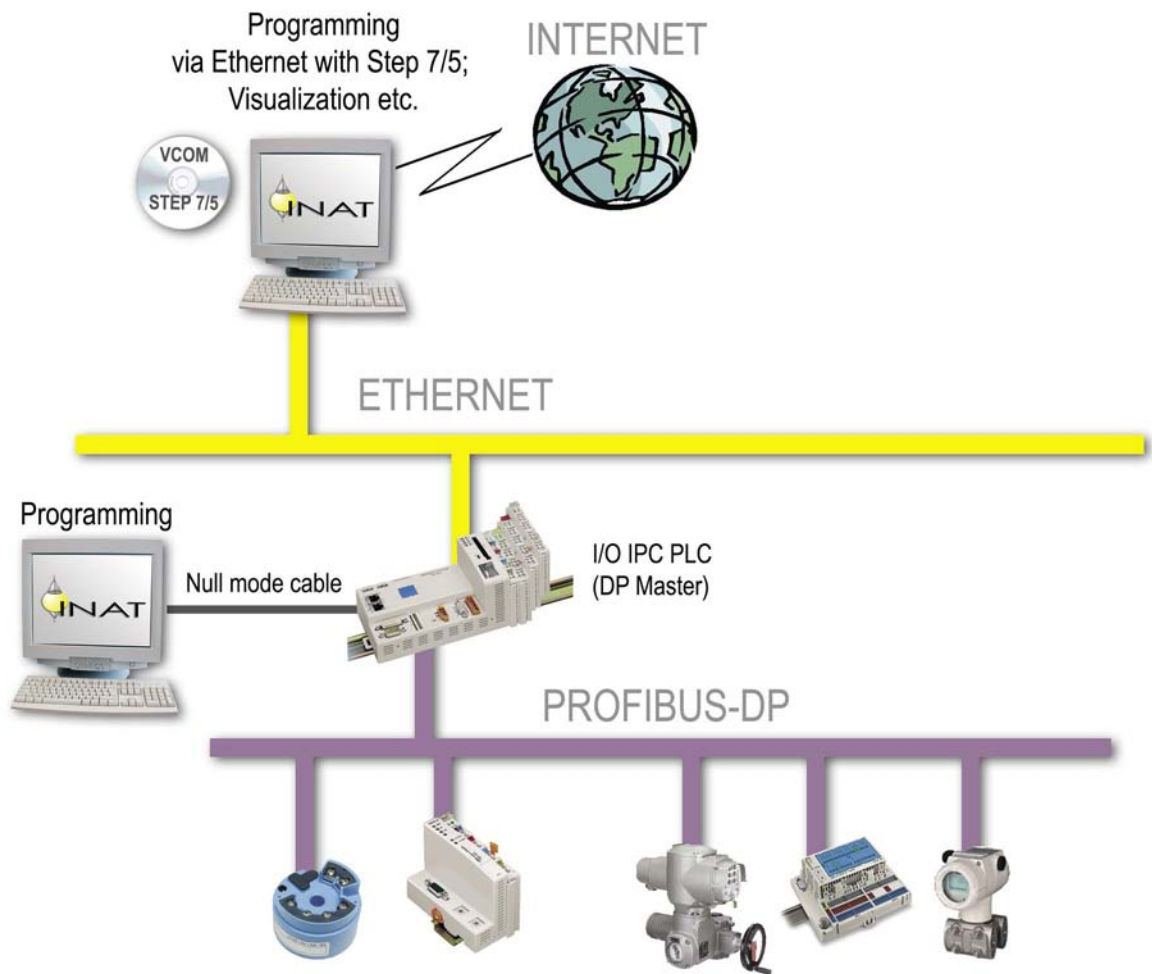


Profibus Configuration software

## Profibus Configuration software

- Hilscher Sycon Profibus Configuration software

Order number:	700-7210-01
---------------	-------------



PC Performance in the field with INAT I/O IPC PLC



Digital Input Modules



Digital Output Modules



Analogue Input Modules



Analogue Output Modules

## Digital Input Modules

	Order numbers:
2 Digital Inputs, 24V DC, 3,0ms	300-2100-01
4 Digital Inputs, 24V DC, 3,0ms	300-2100-02

## Digital Output Modules

	Order numbers:
2 Digital Outputs, 24V DC, 0,5A	300-2200-01
2 Digital Outputs, 24V DC, 2,0A	300-2200-02
4 Digital Outputs, 24V DC, 0,5A	300-2200-03
4 Digital Outputs, 230V AC, 2,0A, Relay 2 NO, floating	300-2200-04

## Analogue Input Modules

	Order numbers:
2 Analogue Inputs, 0-20mA, Differential Input	300-2300-01
2 Analogue Inputs, 4-20mA, Differential Input	300-2300-02
4 Analogue Inputs, 4-20mA, S.E.	300-2300-03
2 Analogue Inputs, +/- 10V DC	300-2300-04
4 Analogue Inputs, +/- 10V DC, S.E.	300-2300-05
4 Analogue Inputs, 0-10V DC, S.E.	300-2300-06

## Analogue Output Modules

	Order numbers:
2 Analogue Outputs, 0-10V DC	300-2400-01
2 Analogue Outputs, 0-20mA	300-2400-02
2 Analogue Outputs, 4-20mA	300-2400-03
2 Analogue Outputs, +/- 10V DC	300-2400-04

**Note:** End terminal see page 67.