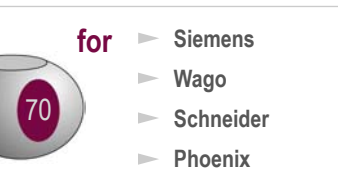


Panel PCs

- Industrial Panel PC Hawk
- Industrial Panel PC Target (fanless)
- Accessories Panel PCs



Industrial Panel PC

Hawk

Operate and visualize
Network analysis

High-performance complete system for operation and visualization.
With OPC Server and network analyzer.

AREAS OF APPLICATION

- Including multi protocol Ethernet OPC Server (see page 2); thereby prepared for communication via Ethernet via:
⇒ ISO on TCP, ISO (H1), Modbus on TCP, NetLink, IBHLink, EtherNet/IP
- Including MPI/PPI OPC Server (see page 7), thereby prepared for communication via COM interface and USB via:
⇒ MPI and PPI (Adapter cable)
- Including network analyzer NetSpector for Industrial Ethernet (see page 17)
- Software completely operable installed
- If desired with visualization software inMOVE (see page 76)
- With and without Touchscreen (resistive)
- Hydrophobic front (IP 65, NEMA 4/12) with 10 mm aluminum alloy (stainless steel optional)
- Expansions via 1 x PCI slot



Hawk, 7'' TFT, 640 x 480

Hawk, 7''

CPU:	VIA C3, 1 GHz low temperature
Display:	7'', TFT, 200 cd/m ² , Resolution: 640 x 480 Pixel
Ethernet:	2 x TP (RJ45), 10 / 100 Mbps
Serial interfaces:	3 x RS232 (1 x for touchscreen), 1 x RS232 / 422 / 485
USB 2.0:	4 x high speed
Memory:	256 MB DDR (max. 512 MB)
Drives:	1 x HDD: 10 GB, 1 x CDROM: 24 x
Power supply Standard: Options see page 76	External power supply, 100 - 240 V AC, 2 A, 50/60Hz
	Order numbers:
Hawk, 7'', without touchscreen, fan	800-2240-01
Hawk, 7'', with touchscreen, fan	800-2250-01

Hawk, 10,4''



Hawk, 10,4'' TFT, 640 x 480

CPU:	VIA C3, 1 GHz low temperature
Display:	10,4'', TFT, 180 cd/m ² , Resolution: 640 x 480 Pixel
Ethernet:	2 x TP (RJ45), 10 / 100 Mbps
Serial interfaces:	3 x RS232 (1 x for touchscreen), 1 x RS232 / 422 / 485
USB 2.0:	4 x high speed
Memory:	256 MB DDR (max. 512 MB)
Drives:	1 x HDD: 10 GB, 1 x CDROM: 24 x
Power supply standard:	External power supply, 100 - 240 V AC, 2 A, 50/60Hz Options see page 76
	Order numbers:
Hawk, 10,4'', without touchscreen, fan	800-2260-01
Hawk, 10,4'', with touchscreen, fan	800-2270-01

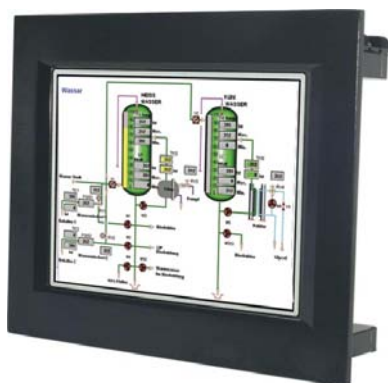
Hawk, 12,1''



Hawk, 12,1'' TFT, 800 x 600

CPU:	VIA C3, 1 GHz low temperature
Display:	12,1'', TFT, 200 - 250 cd/m ² , Resolution: 800 x 600 Pixel
Ethernet:	2 x TP (RJ45), 10 / 100 MBit/s
Serial interfaces:	3 x RS232 (1 x for Touchscreen), 1 x RS232 / 422 / 485
USB 2.0:	4 x high speed
Memory:	256 MB DDR (max. 512 MB)
Drives:	1 x HDD: 10 GB, 1 x CDROM: 24 x
Power supply standard:	External power supply, 100 - 240 V AC, 2 A, 50/60Hz Options see page 76
	Order numbers:
Hawk, 12,1'', without touchscreen, fan	800-2000-01
Hawk, 12,1'', with touchscreen, fan	800-2001-01

Fanless Version



Hawk, 15'' TFT, 1.024 x 768

Hawk, 15''

CPU:	VIA C3, 1 GHz low temperature
Display:	15,1'', TFT, 200 - 250 cd/m ² , Resolution: 1.024 x 768 Pixel
Ethernet:	2 x TP (RJ45), 10 / 100 MBit/s
Serial interfaces:	3 x RS232 (1 x for touchscreen), 1 x RS232 / 422 / 485
USB 2.0:	4 x high speed
Memory:	256 MB DDR (max. 512 MB)
Drives:	1 x HDD: 10 GB, 1 x CDROM: 24 x
Power supply standard:	External power supply, 100 - 240 V AC, 2 A, 50/60Hz Options see page 76
	Order numbers:
Hawk, 15'', without touchscreen, NO fan	800-2100-01
Hawk, 15'', with touchscreen, NO fan	800-2101-01

Hawk, 17"



Hawk, 17" TFT, 1.280 x 1.024,
wall fastening

CPU:	VIA C3, 1 GHz low temperature
Display:	17", TFT, 200 - 250 cd/m ² , Resolution: 1.280 x 1.024 Pixel
Ethernet:	2 x TP (RJ45), 10 / 100 Mbps
Serial Interfaces:	3 x RS232 (1 x for touchscreen), 1 x RS232 / 422 / 485 (2 x external, 2 x internal)
USB 2.0:	4 x high speed
Memory:	256 MB DDR (max. 512 MB)
Drives:	1 x HDD: 40 GB, 1 x CDROM: 24 x
Power supply standard: Options see page 76	External power supply, 100 - 240 V AC, 2 A, 50/60Hz
	Order numbers:
Hawk, 17", without touch-screen, fan	800-2200-01
Hawk, 17", with touch-screen, fan	800-2210-01

Hawk, 21"



Hawk, 21" TFT, 1.280 x 1.024,
wall fastening

CPU:	VIA C3, 1 GHz low temperature
Display:	21", TFT, 300 cd/m ² , Resolution: 1.280 x 1.024 Pixel
Ethernet:	2 x TP (RJ45), 10 / 100 Mbps
Serial Interfaces:	3 x RS232 (1 x for touchscreen), 1 x RS232 / 422 / 485 (2 x external, 2 x internal)
USB 2.0:	4 x high speed
Memory:	256 MB DDR (max. 512 MB)
Drives:	1 x HDD: 40 GB, 1 x CDROM: 24 x
Power supply standard: Options see page 76	External power supply, 100 - 240 V AC, 2 A, 50/60Hz
	Order numbers:
Hawk, 21", without touch-screen, fan	800-2220-01

Industrial Panel PC

Target (fanless)

High-performance complete system for operation and visualization.
With OPC Server and network analyzer.

AREAS OF APPLICATION

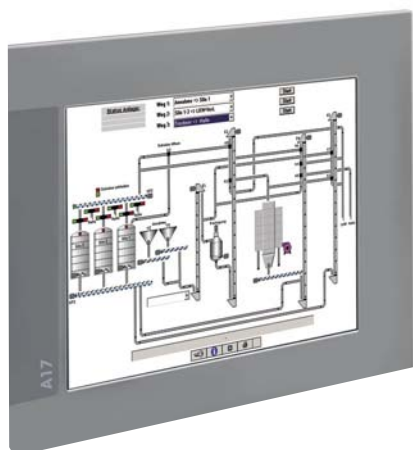
- Including multi protocol Ethernet OPC Server (see page 2); prepared for communication via Ethernet via:
⇒ ISO on TCP, ISO (H1), Modbus on TCP, NetLink, IBHLink, EtherNet/IP
- Including MPI/PPI OPC Server (see page 7); prepared for communication via COM interface and USB via:
⇒ MPI and PPI (Adapter cable)
- Including network analyzer NetSpector for Industrial Ethernet (see page 17)
- Software completely installed
- If desired, with visualization software inMOVE (see page 76)
- With and without Touchscreen (resistive)
- Front: IP 65, NEMA 12, aluminum (5 mm) with decor foil RAL 9006, (stainless steel optional)
- Expansions via 1 x PCI slot



Target I, 15" TFT, 1.024 x 768

Target I, 15"

CPU:	VIA C3, 600 MHz passive cooling
Display:	15", TFT, 250 cd/m ² , Resolution: 1.024 x 768 Pixel
Screening grid:	Safety glass, coated, thermally pre-stressed
Ethernet:	1 x TP (RJ45), 10 / 100 Mbps
Serial Interfaces:	1 x RS232 (with touchscreen occupied), 1 x LPT, 2 x PS/2
USB 2.0:	4 x high speed
Memory:	256 MB DDR (max. 1 GB)
Drives:	1 x HDD: 30 GB
Power supply:	Internal power supply, 90 - 260 V AC, 50/60Hz
Mounting:	console panel
	Order numbers:
Target I, 15", without touchscreen, NO fan	800-2400-01
Target I, 15", with touch-screen, NO fan	800-2400-02

Target II, 17''

Target II, 17'', 1.280 x 1.024

CPU:	VIA C3, 667 MHz, passive cooling
Display:	17'', TFT, 250 cd/m ² , Resolution: 1.280 x 1.024 Pixel
Screening grid:	Safety glass, coated, thermally pre-stressed
Ethernet:	1 x TP (RJ45), 10 / 100 Mbps
Serial Interfaces:	1 x RS232 (with touchscreen occupied), 1 x LPT, 2 x PS/2
USB 2.0:	4 x high speed
Memory:	256 MB DDR (max. 1 GB)
Drives:	1 x HDD: 30 GB
Power Supply:	Internal power supply, 90 - 260 V AC, 50/60Hz
Mounting:	console panel
	Order numbers:
Target II, 17'', without touchscreen, NO fan	800-2410-01
Target II, 17'', with touch-screen, NO fan	800-2410-02

Target III, 19''

Target III, 19'', 1.280 x 1.024

CPU:	VIA C3, 667 MHz, passive cooling
Display:	19'', TFT, 250 cd/m ² , Auflösung: 1.280 x 1.024 Pixel
Screening grid:	Safety glass, coated, thermally pre-stressed
Ethernet:	1 x TP (RJ45), 10 / 100 Mbps
Serial Interfaces:	1 x RS232 (with touchscreen occupied), 1 x LPT, 2 x PS/2
USB 2.0:	4 x high speed
Memory:	256 MB DDR (max. 1 GB)
Drives:	1 x HDD: 30 GB
Power Supply:	Internal power supply, 90 - 260 V AC, 50/60Hz
Mounting:	console panel
	Order numbers:
Target III, 19'', without touchscreen, NO fan	800-2420-01
Target III, 19'', with touch-screen, NO fan	800-2420-02

All around closed aluminium housing (IP 65)



Target WP, 15'', 1.024 x 768

- All around closed housing in accordance with IP 65 for hard ambient conditions (dust, shower water etc.)
- Convection cooling, no moving parts, noiseless, durable and reliable

CPU:	VIA Eden, 733 MHz low temperature
Display:	15'', TFT, 250 cd/m ² , Resolution: 1.024 x 768 Pixel
Screening grid:	Safety glass, coated, thermally pre-stressed
Ethernet:	1 x TP (RJ45), 10 / 100 Mbps
Serial Interfaces:	2 x RS232 (with touchscreen 1 x occupied), 1 x RS232 / 422 / 485, 1 x LPT, 1 x PS/2
USB 1.1:	2 x
Memory:	128 MB DDR (max. 512 MB)
Drives:	1 x HDD: 30 GB
Power Supply:	Internal power supply, 85 - 265 V AC, 50/60 Hz
Mounting:	flanged connection
	Order numbers:
Target WP, 15'', without touchscreen, NO fan	800-2400-03
Target WP, 15'', with touchscreen, NO fan	800-2400-04

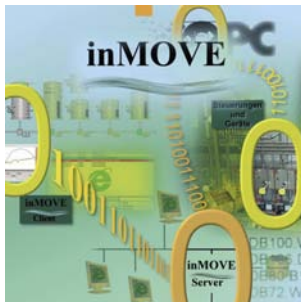
Accessories Panel PCs



Power pack plug



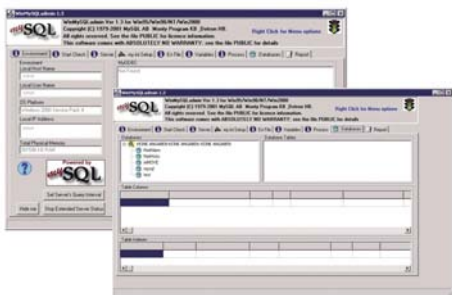
Operating systems



Visualization inMOVE



NetObjects Fusion



MySQL

Optional: Connector power pack (only Hawk)

	Order numbers:
External power supply, 24 V DC, for bus, boat etc.	800-9900-02
External power supply, 36-48 V DC, for train etc.	800-9900-03

Operating systems

	Order numbers:
Windows 2000, german	590-1000-01
Windows 2000, english	590-1000-02
Windows XP Professional, german	590-1100-01
Windows XP Professional, english	590-1100-02

Visualization inMOVE

- Client Server visualization system
- Unlimited number of clients
- Full OPC support

Note: When using inMOVE a MySQL licence and the software NetObjects Fusion are required (see below)

Order number:	510-2000-01
---------------	-------------

NetObjects Fusion

- HTML editor, version 8
- Editing tool for inMOVE

Order number:	510-2100-01
---------------	-------------

MySQL

- MySQL Server classic, Server license

Order number:	580-1000-01
---------------	-------------