

Virtual ComPort VCOM

Serial <=> Ethernet Converter for Software Applications

Many software applications are designed exclusively for the serial interface. Running these applications via Ethernet is in many cases only possible with additional – mostly expensive – Software or Hardware. Virtual ComPort (VCOM) is the easy-to-use alternative at an affordable price.

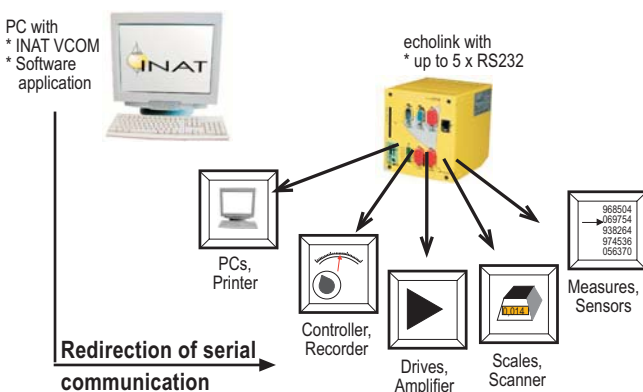
Applications

- S7 programming without Softnet®

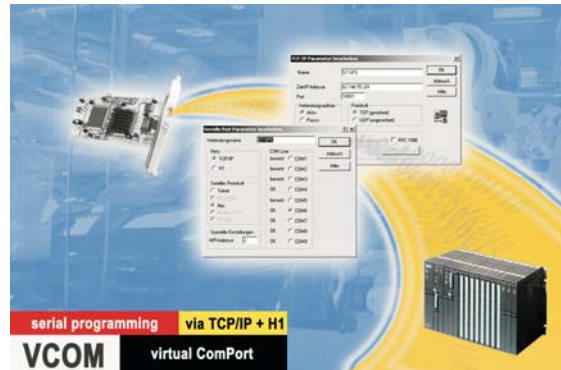


- VCOM supports the virtual MPI interface
=> Programming with Step® 7 is possible:
NO Softnet® required!

- Ethernet access to devices with serial interface



- With echolink serial devices become network capable. With VCOM serial communication programs are redirected and can be used over the network



Redirection of serial communication to the Ethernet adapter

How does it work?

- VCOM is a redirector software, that enables your existing serial communication programs to be used over the network.
- Additional virtual serial interfaces are created on the PG / PC. The application "sees" these serial interfaces and uses them like "real" interfaces.
- If the application accesses to the virtual port, data is automatically redirected to the Ethernet adapter and transmitted across the LAN.
- From the user's point of view, the remote device appears as though it were directly connected to the PC/PG by means of a standard Com port.



Technical Data

- **Ethernet Protocols**
TCP/IP, ISO (H1)
- **Serial Protocols**
MPI, Telnet
- **Supported PLCs**
S7-400®, S7-300®
- **Supported CPs**
INAT echolink
INAT S7-TCP/IP
Siemens CP 443-1®
Siemens CP 343-1®
- **Operating Systems**
Win NT, 2000, XP

Order Data

VCOM, virtual ComPort

Product:	Order No.:
VCOM, Telnet	Download
Licence MPI, TCP/IP	100-3400-02
Licence MPI, TCP/IP + ISO (H1)	100-3400-12

